

The Lamb and the Lion

Larry Grove

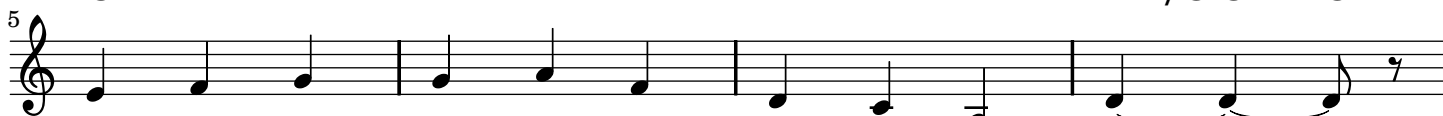
♩ = 120

C C/B \flat Dm 7 /A Dm 7 /G G



Je - sus the lamb who is wor - thy of ho - nor.
Je - sus the li - on, tri - um - phant - ly liv - ing.

C F Dm Dm/G G 9 G 7



His vic - 'try bought by His death on the cross.
In - fi - nite righ - teous - ness He off - ers all.

Em 7 F Dm E



We should have died there; He took our stead. And
Our works count worth - less. He gives in - stead, His

Am 7 Em E $^{\circ}$ Dm 7



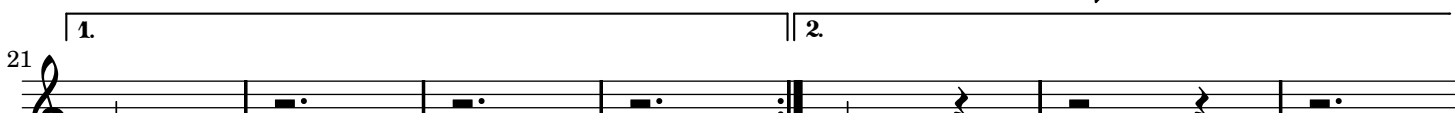
stayed for His love of us, love that en - dures. And
spir - i - t'ual rich - ex to count for our own. And

G 7 E 7 E 7 /G \sharp Am Dm 7 Dm 7 /G G



when the full price was paid death had no hold ov - er
makes us His child - ren to live ev - er - more in His

C Am 7 Dm 7 G 7 C maj7 A \flat^7 B maj7 C



Him.

home.